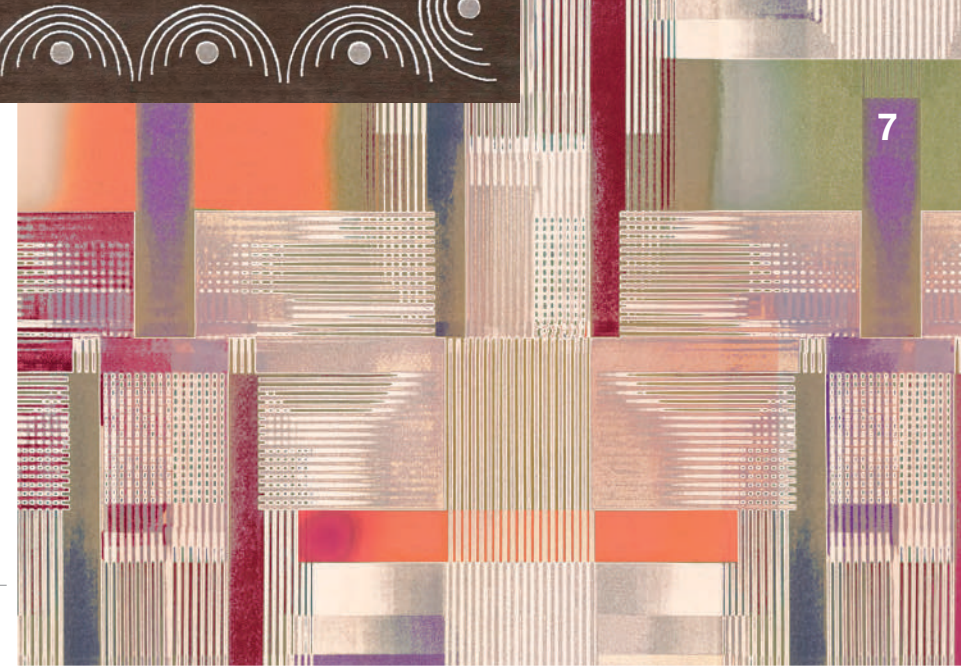
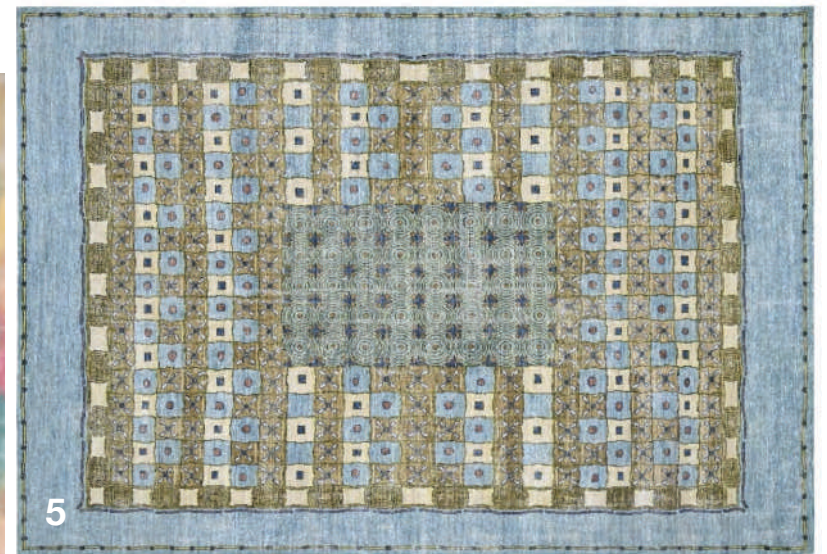
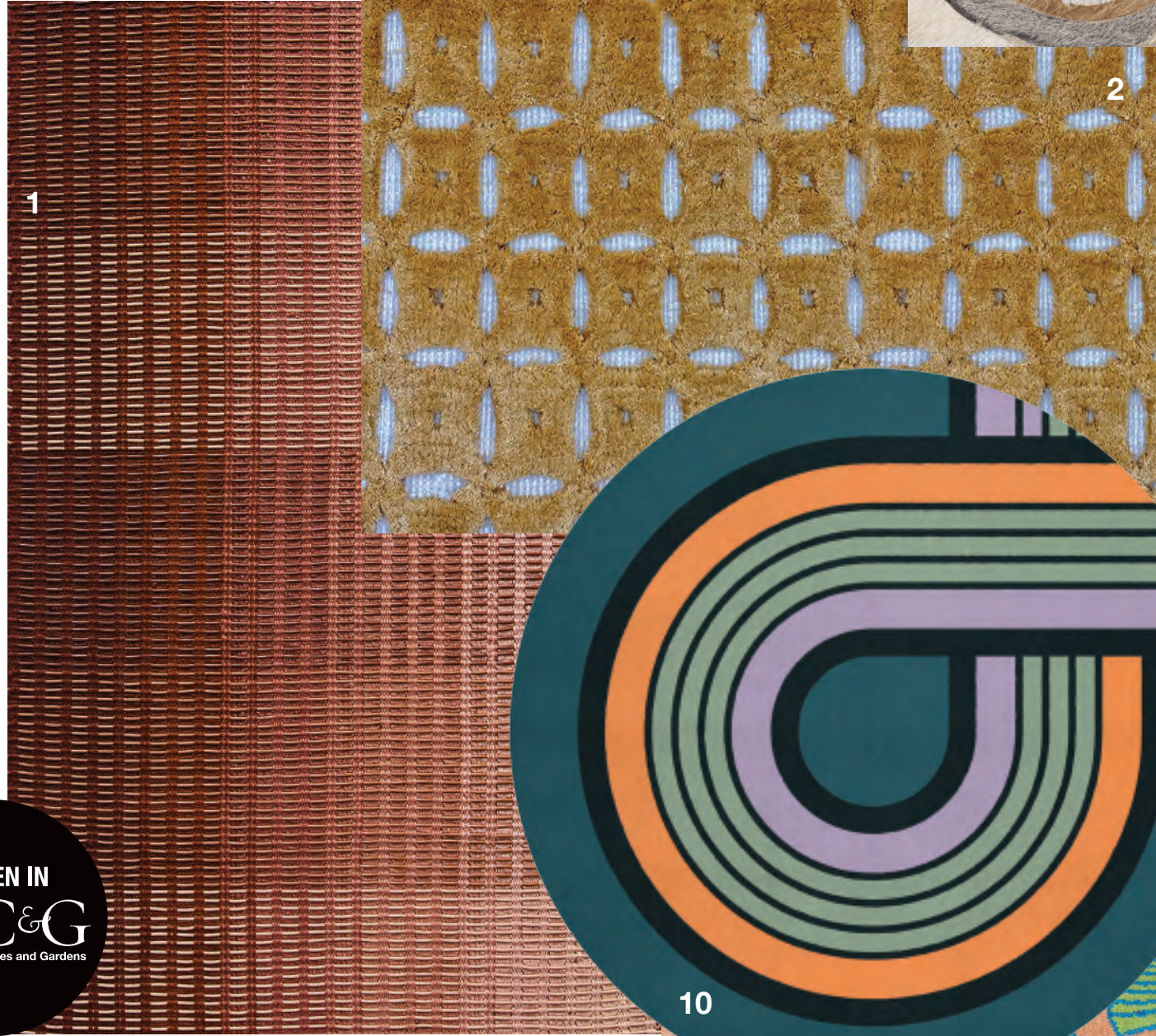


FLAT OUT FAB RUGS



Custom

- 1. Shiir** Masterfully handcrafted and ethically constructed, Albers is inspired by African Tuareg mats. Composed of overlapping, multi-hued linen and leather cord, the design is a tribute to artist Josef Albers' "Homage to the Square" series. Available through ALT for Living, NYC, altforliving.com, shiirrugs.com.
- 2. Studio Four NYC** Designed by Studio Four NYC and produced in Nepal using traditional Nepalese techniques, Johar is a hand-knotted, high-low, silk pile and wool base area rug. Made to order, the rug is available in custom sizes and colors. studiofournyc.com.
- 3. Patterson Flynn** Expressing a dramatic sense of movement, the Longshore rug in Oyster-Multi reads like a topographical map. The direction and pile of the individual bands of hair-on-hide give the rug a wave-like energy. pattersonflynn.com.
- 4. Jan Kath** Jan Kath's Insert Coin collaboration with Frankfurt artist Raphael Brunk transforms his artwork into colorful abstract rugs. Round One, one of the 12 modern rug interpretations, is composed of silk and wool in multicolors. jan-kath.com.
- 5. Ward + Gray** Made to order, Spellbound is a hand-knotted, 100-percent Ghazni wool rug with antique distressing. The worn denim background is mixed with olive greens and deep indigo accents and can be customized in shape or size. wardandgray.com.
- 6. Nordic Knots** Designed by Campbell-Rey for Nordic Knots, Folding Ribbon is a creative interpretation of the ribbons and swags emblematic of 18th-century Gustavian décor. Handmade in small batches, the rug is crafted from soft and durable New Zealand wool. nordicknots.com.
- 7. MOOOI** Collaborating with Gensler, Moooi presents Weft-Warp-Web in the Bright colorway. For ultimate customization, Moooi's carpet configurator allows customers to create their own carpet in a variety of colors and sizes with the ability to enlarge or shrink the pattern. mooiocarpets.com.
- 8. Erik Lindström** Apollo hails from the new Frame collection of border-focused patterns by Erik Lindström. In a nod to the Art Deco movement and Greek architecture, the design of raised arches is achieved in lustrous silk and wool. eriklindstrom.com.
- 9. Carini** The bold botanical pattern of Gingko Stroll is inspired by the leaves of the native tree of East Asia. Joseph Carini selected unique colors for the pattern in knotted wool and silk. The rug is customizable in color, design layout, material and size. carinincarpets.com.
- 10. Lucy Tupu** The Te Aro collection reflects the vibrant colors and graphic designs of the '60s and '70s era in eight distinctive designs. Mount St in Lavender is hand-tufted in 100-percent New Zealand wool and is customizable in size, shape, color and material. lucytupu.com.



WHAT'S MOST IMPORTANT TO YOU WHEN BUYING A RUG? ARE YOU LOOKING FOR A BESPOKE DESIGN CRAFTED TO YOUR EXACT SPECIFICATIONS? OR IS ECO-FRIENDLY OR EASY TO CLEAN AT THE TOP OF YOUR LIST? WE'VE CURATED A SELECTION OF RUGS IN EACH CATEGORY TO MAKE YOUR DECISION MAKING EASIER. BY MARY FITZGERALD